

SWARTHMORE BOROUGH

POLICE DEPARTMENT



Annual Report for

2005

The Swarthmore Borough Police Department is pleased to present to the community its annual report for 2005. The department continues to provide a high level of service around the clock throughout the year. With the hiring of a new officer in June, 2005 the department is now back to full strength. We are excited about being able to serve the community at a level often exceeding that of larger departments.

PERSONNEL

Officer Anthony Aloï was sworn in as the newest member of the department on June 21st, 2005. Officer Aloï has a Bachelor of Science degree in business management and, at the time of his hiring by the Borough, had served eight months as a part-time officer in the Yeadon Borough Police Department. In the short time since his appointment Officer Aloï has demonstrated a dedication to serving the community in a way consistent with the culture of the Swarthmore Police Department.

On December 12, 2005, William Thomas was promoted to sergeant. As a 14 year veteran Sergeant Thomas brings a wealth of talent to his supervisory position. His promotion completed the implementation of a management team concept in the police department. This allows for improved supervision and enhances training. The management team will meet monthly to review department issues and performance. During these discussions a free exchange of ideas will allow the chief of police to draw on the experience and expertise of Sergeant Thomas and Sergeant Stufflet to enhance and improve the overall delivery of police service. Input is also sought on a regular basis from Mayor Gerner, members of the Public Safety Committee, and other members of Borough Council. The department and the Borough will benefit from this management improvement.

The department personnel provide daily police service to Swarthmore and Rutledge around the clock. They provide assistance in all types of weather and under all types of conditions. The list below shows the years of service as of December 31, 2005, provided by these dedicated members of the department:

| <u>NAME</u> | <u>POSITION</u> | <u>YEARS OF SERVICE</u> |
|------------------|---|-------------------------|
| Joseph Maginnis | Patrol Officer | 21 |
| William Thomas | Sergeant | 14 |
| Raymond Stufflet | Sergeant | 13 |
| Ann Bardo | Patrol Officer | 12 |
| James Terrell | School Crossing Guard | 12 |
| Barbara Burgett | Clerk | 9 |
| Roger Hinckley | Patrol Officer | 9 |
| Edwin Kline | Patrol Officer | 9 |
| Brian Craig | Chief of Police | 7 |
| John A. Wesley | School Crossing Guard and Meter Maintenance Technician | 6* |
| John Stilwell | Patrol Officer | 2 |
| Charles Rowles | School Crossing Guard | 1 |
| Anthony Aloï | Police Officer | 6 mos. |

*Mr. Wesley is a retired Swarthmore Police Sergeant. This figure only represents his current, part-time position.

INCIDENT AND CRIME DATA

Compared to almost any standard, Swarthmore continues to have a relatively low incidence of crime, especially serious violent crime. While the department is committed to protecting our citizens from being victimized, the continued low crime rate is the result of a total community effort. The best defense against crime is a vigilant and involved citizen base. It is extremely important for a person observing any activity that they believe is suspicious to immediately call 911. Additionally, victims of an incident should also call 911 immediately. Calling 911 helps to insure a prompt response by an officer. Our department records every reported crime incident and, in our response to public safety, keeps the community informed of any trends or patterns through discussion at public meetings and in newspaper articles. Several crimes in the past years have been solved and perpetrators arrested because of help from the community. This message bears repeating.

2005 saw an eleven percent reduction of serious (Part 1) crime from 2004. One result of having such a low crime rate is that percentage differences seem dramatic when there is actually very little change in the absolute number. For example, there was a 22% increase in assaults in 2005; however, eleven assaults were reported in 2005 as opposed to nine in 2004. Stolen vehicles increased 100%; there were two stolen vehicles in 2005 while only one vehicle was reported stolen in 2004. The information regarding crime data is included as an appendix to this report. It is important that the reader appreciate the total picture presented by this data and not focus on a single item. When compared to surrounding communities Swarthmore has a very low crime rate. It is also much lower than Delaware County and Pennsylvania averages.

One category that continues to be a concern to the department is identity theft. This crime is usually reported as fraud in the crime data. Fourteen cases were reported in Swarthmore in 2005, a 133% increase over 2004. However, this is only a small part of the story. We have received reports of identity theft that occurred in other jurisdictions. While the victims may live in Swarthmore the reports are filed with the police department where the incident occurred. As a result we believe that there are probably many more members of the Swarthmore and Rutledge communities who are victims of this crime than are reported in our figures. It is very important that persons constantly monitor their personal and financial information and immediately report any discrepancies to their financial institution or the credit reporting service. There are many steps a person can take to safeguard this information. If you have a concern, please contact the department and we will be happy to assist anyone in working to improve their personal security.

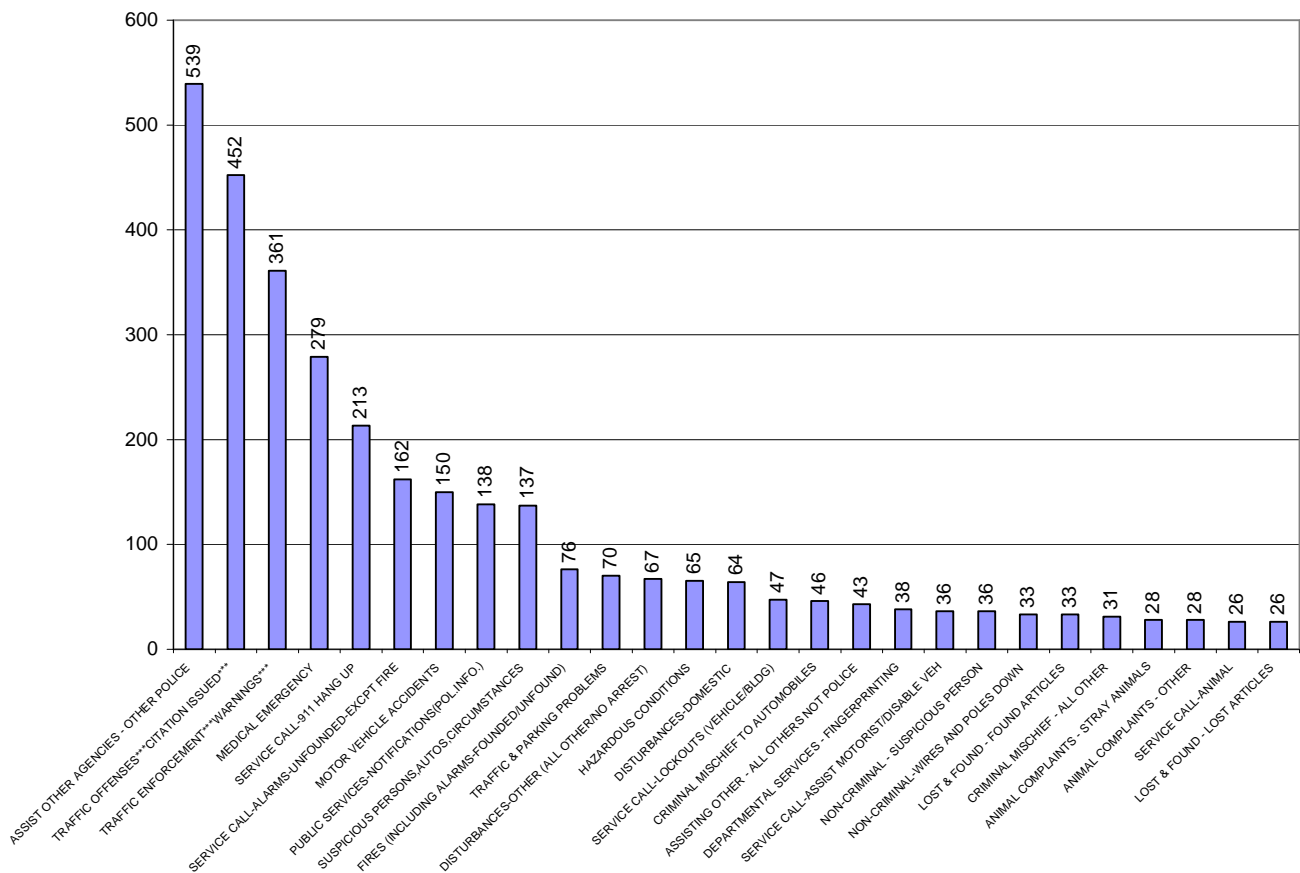
Appendix A contains various charts and graphs related to crime data. Data comparing the experience of crime in Swarthmore to surrounding communities, Delaware County and Pennsylvania is presented on page five of the appendix. As noted above Swarthmore is below the average for the County and State. Swarthmore continues to be among the safest communities. It should be noted that the data presented is based on the latest data for 2005 but it may not be complete. Other municipalities still have time to review and enter data for 2005. However, the data is informative for comparison purposes. Persons interested in researching additional reported crime data can check the Pennsylvania State Police website at www.psp.state.pa.us.

It is important to recognize that our officers do much more than record incidents of crime. Of the 25,606 incident reports recorded since June of 1999 (an average of 3,885 per year), only an extremely small percentage deals with crime. The incident reports are classified under 443 different codes. The incident reports are constantly analyzed to see where we are performing our services, for what reasons, and how we can better utilize our resources. Of the top 25 reasons for incident reports being generated only two are crime related.

The single most frequent reason for incident reports continues to be assisting other agencies. The mutual assistance agreement signed by all police departments in Delaware County allows officers from other jurisdictions to provide assistance when requested. When an officer asks for assistance the responding officers will be able to take appropriate action in emergency situations as necessary while the originating department retains management of the assignment. This assistance agreement insures communities such as Swarthmore continue to have police service and/or backup support even when officers are busy with other Borough matters. We routinely receive assistance from Morton Borough and Nether Providence Township as well as occasional interaction with Ridley and Springfield Townships and Media Borough. In instances requiring additional help Swarthmore can count on many more departments as well as the Pennsylvania State Police.

Traffic enforcement in the form of citations issued and warnings are the second and third most frequent activity of the officers. Traffic is constantly monitored for a variety of reasons including the community's continuing concern for safety. Medical emergencies are answered by officers as the fourth most frequent assignment and response to 911 hang-ups is the fifth. These top five incident categories account for 48% of the reports generated by the officers. Below is a chart of the incident frequency for 2005:

ANALYSIS OF INCIDENT REPORTS FOR 2005
(Total Incidents = 3,859)



DEPARTMENT OUTREACH

The Swarthmore Borough Police Department continues its record of providing helpful service to the community in a wide variety of ways, many of which are outside the traditional role of police officer. For instance, officers have arranged for home maintenance and food delivery for an elderly resident, assisted in finding lost animals, helped people fill out confusing forms, and stopped water leaks in homes. We continue to assist persons locked out of their vehicles, a service which many police departments no longer provide.

The Swarthmore Police Department continues to reach out to the community to provide a positive interaction with those we serve. The officers strive to be of service when necessary without being an imposing presence on the community. Officers are routinely present at major town events including the Memorial Day observation, Independence Day celebration, the Charity Fun Fair, and other large and small community activities. We welcome the opportunity to speak and interact with our citizens and visitors in a friendly atmosphere.

Sergeant Thomas and Officer Bardo teach Drug Abuse Resistance Education (DARE) to the 5th grade at Swarthmore Rutledge School. While the message to avoid drugs and tobacco is an important component of this program its main value is the opportunity for children to see the officers in a setting where they learn they can interact with the officers on a personal level. Over the course of the ten lessons the students and officers build a relationship that lasts well beyond the culmination of the course. There have been many experiences where former students, when they were older, approached these officers with problems or situations that they may otherwise have been reluctant to share with a police officer.

Chief Craig instructs Strath Haven High School students about the importance of wearing seat belts through a program called Survival 101. This is a DVD based presentation developed by the Pennsylvania Department of Transportation and Buckle Up PA. Chief Craig also participates in the Dimensions in Living program at Strath Haven Middle School that provides information to the students about various professions. Chief Craig reviews the requirements to be a police officer, the things police officers do while on duty and answers student questions.

Throughout the year the officers give presentations to groups and tours of the police station. These presentations and tours are available to the public and can be arranged by calling the department (610-543-0123) or sending an e-mail (swarthpd1@aol.com). We also have various programs to foster more interaction with the officers including the police ride-along program.

With the assistance of Tom Elverson of the Dean's Office at Swarthmore College the police department meets monthly with representatives of Swarthmore College's administrative staff. Mr. Elverson is a former chair of the Council's public safety committee and also a former Council president as well as a current resident. He is well aware of the issues faced by Swarthmore College and the Swarthmore Police Department. The meetings are also attended by Chief Craig, Sergeant Stufflet, and Sergeant Thomas. These meetings continue to be highly productive. They allow for discussion of common issues and concerns before they become problems. Since these meetings have started all parties agree the improved communication has benefited everyone.

Chief Craig and Sergeant Stufflet have also addressed student groups on the College's campus including training sessions for students who are resident assistants and student-based fireside chats. During these encounters the police department has been able to openly discuss issues that have led to

friction in the past. The students also have the opportunity to question police policies and procedures. Many students have commented the sessions led to better understanding police actions. While there is not always agreement the participants usually leave the sessions with a mutual respect for each other.

The department continues to work toward the community understanding that we are here to serve their needs within the context of public safety. While some enforcement activities may result in a certain level of community resentment we try to stress the positive services we provide. As noted in previous sections the activity of the officers is directed at providing assistance and many times it is not recorded on an incident report. We respond to medical emergencies, make sure persons who dial 911, even accidentally, are safe (we follow up on all 911 calls), and help people who have locked themselves out of their cars. We value the input of the community and continue to welcome any ideas or recommendations on how to improve service.

TECHNOLOGY AND RECORDS MANAGEMENT

Our computerized incident reporting system, ALERT, continues to provide valuable information to the department, the community, and is of great assistance in the management of the department. Since the system was installed and initiated in mid-1999 there have been 25,606 incidents recorded. The data is constantly reviewed and analyzed to critique department services. These data help us understand how and where we are dedicating our resources. Trends can be identified and solutions for actual or potential problems can be implemented. For example, the department has been able to identify locations where repeated false alarms have been experienced and helped the owners to address the problem. The frequency of 911 hang-ups is also an area where attention has prevented non-emergency need based repeated calls.

Demographic information collected by this system allows the department to monitor how service and enforcement affects all segments of the community. This information has been studied for several years and verifies that the actions taken and services rendered by the department are done without regard to a person's ethnicity.

The department continues to benefit from the mobile data terminals provided by the Delaware County Emergency Services. These are laptop computers installed in each of the department's marked police vehicles. While officers receive their 911 assignments from the police radio, additional details regarding the assignments are displayed on these computers. Officers can also see maps of the areas around the assignments and a history of assignments at a given location. The computers can also be used to check with various databases including vehicle registration and wanted persons. The computers are valuable tools which allow the officers to be more effective while on patrol. They can perform operations that previously required them to return to the police station to complete which results in a higher level of efficiency in our patrol operations.

The Swarthmore Police Department participates in a centralized booking process. The Media Borough Police Department serves as the central arrest processing location for several surrounding departments. As a result of this cooperative effort the participating departments use automated fingerprint technology which would otherwise be cost prohibitive to the individual departments. The process takes digital fingerprints and photographs. The person being fingerprinted is immediately entered into Pennsylvania's criminal information database. Once the fingerprints are submitted through this system the processing officer knows within minutes if the offender has an arrest record or if he or she has provided a false identity. The contribution the Swarthmore Police Department makes to this centralized system is small compared to the overall cost and effectiveness. We appreciate the contribution made by the Media Borough Police Department in hosting the booking station.

TRAINING

Training is an ongoing commitment. We seek every opportunity to educate the officers to the current issues confronting law enforcement. Additionally, we participate in opportunities that may be considered traditionally outside the realm of law enforcement. Many of the training opportunities are funded by grants or are provided free by the sponsoring organization.

All officers attend annual training required by the Municipal Police Officers Education and Training Commission in accordance with Act 180. These courses include legal updates and officer safety as well as firearms qualification and first aid recertification. In addition officers received the following training during 2005:

- Chief Craig
 - Advanced Crisis Communication Training
 - Police Internal Affairs
 - PA Worker and Community Right-to-Know Training
 - Media Relations
 - Alcohol Enforcement Issues in College Communities
 - Safe Schools Tabletop Exercises
 - Records Retention
 - Labor Issues
 - Role of Critical Incident Stress Management in Law Enforcement
 - PA State Police Risk and Vulnerability Assessment Team
 - FBI - Terrorism Update
 - PA Law Enforcement Intelligence Sharing
 - Dealing with the National Media
 - National Center for Missing and Exploited Children
 - PCPA Technology Programs
 - FEMA Introduction to the Incident Command System for Law Enforcement
 - FEMA National Incident Management System
 - Terrorism: Trends and Tactics Seminar
 - Police Liability Issues: Prepare, Don't React
 - PEMA On-Line Course #1 Emergency Response to Terrorism
 - PLCB Alcohol and Sexual Violence – Preventive Measures You Need To Know
 - PA State Police Terrorism Seminar
 - Law Enforcement and Suicide, The New Epidemic
 - MAGLOCLLEN - Regional Information Sharing System (RISS)
 - Motivating and Supervision
 - Problem Specific Policing
 - Risk and Threat Assessment
 - Creating a Culture of Integrity
- Sgt. Stufflet
 - ALERT Computer Incident Reporting System
- Sergeant Thomas
 - D.A.R.E. Elementary Training
- Officer Alois
 - Standardized Field Sobriety Testing Practitioner
 - Robic Chronograph

Certified Type "A" Breath Test Equipment Operator

- Officer Bardo D.A.R.E. Elementary Training
 Crisis Negotiations
 Controlled Party Dispersal
- Officer Hinckley Current and Significant Aspects of Criminal Sexuality
 Controlled Party Dispersal
- Officer Kline COP-Safe Controlled Operational Procedures
- Officer Maginnis National Incident Management System (NIMS) Introduction
 Controlled Party Dispersal

Every month Sergeant Raymond Stufflet trains with the Central Delaware County Tactical Response Team. He has been a member of this team for the past 13 years. The team is a multi-jurisdictional special weapons and tactics team serving eleven different municipalities in Delaware County, PA. Thirteen separate agencies contribute manpower and funding for the team. The primary response area has a population of roughly 150,000. The pooling of resources allows the participating departments to provide a service none of the agencies could provide individually. Officer Ann Bardo joined this team as a hostage negotiator two years ago.

Officer Joseph Maginnis serves on the Major Incident Response Team for Delaware County. He has been trained to respond to various incidents that would require a response outside the capability of a single jurisdiction in the county. During 2005 Sergeant Stufflet and he were trained in the use of Personal Protective Equipment which would allow them to function in an incident involving weapons of mass destruction. Following completion of the training both Officer Maginnis and Sergeant Stufflet were issued equipment valued at more than \$1,200. That equipment was obtained through a Homeland Security grant.

In 2005 all officers received training on an emergency vehicle simulator that was sponsored by the Borough's insurance provider. This simulator allowed the officers to practice various emergency response scenarios in a simulator that represented a Ford Crown Victoria Police Interceptor with standard police equipment. Following completion of each scenario the officers could review their response and receive constructive criticism about how to identify hazards and improve driving skills. This was completed in a safe environment that allowed mistakes without risking injury to any officers or damaging equipment. Sergeant William Thomas was trained as a simulator operator in advance and provided valuable input to all the officers during their use of the simulator.

VEHICLES

In 2004 the department purchased a 4-wheel-drive Ford Explorer. It replaced a similar vehicle purchased in 1999. This car is used for routine patrol but is not suited for pursuit purposes. Fortunately the department has not experienced a great need for pursuit capabilities. While the police fleet is small the Explorer allows the department to insure service during adverse weather conditions when the other cars are more difficult to operate safely. Keeping a 4-wheel-drive in the vehicle inventory enhances the department's ability to provide continuous reliable service.

Recently the department started purchasing extended warranties with each vehicle. These warranties cover a period of 5 years or 100,000 miles. Past experience has shown these warranties to be financially beneficial to the department's operation. Costly repairs for unexpected occurrences outside the normal warranty period are completed with a minimal impact on the budget. Since we have been purchasing the warranties the return received from them has exceeded the purchase price for all but one vehicle.

As reported in previous annual reports the fleet's operations are constantly monitored for opportunities for improvement. Below is an overview of the vehicle's operations for 2005:

| RPC 95-4 2003 Dodge Intrepid | | | | | | |
|------------------------------|----------|-----------------------|--|----------|---------------------|------|
| Total Miles: | 12,342.0 | Total Gallons: | | 1,353.00 | Average MPG: | 9.12 |

| RPC 95-21 2000 Chevrolet Impala | | | | | | |
|---------------------------------|----------|-----------------------|--|----------|---------------------|-------|
| Total Miles: | 14,092.0 | Total Gallons: | | 1,362.57 | Average MPG: | 10.34 |

| RPC 95-23 2001 Ford Taurus | | | | | | |
|----------------------------|----------|-----------------------|--|--------|---------------------|-------|
| Total Miles: | 12,370.0 | Total Gallons: | | 537.67 | Average MPG: | 23.01 |

| RPC 95-2 2004 Ford Explorer | | | | | | |
|-----------------------------|----------|-----------------------|--|----------|---------------------|------|
| Total Miles: | 23,573.0 | Total Gallons: | | 2,581.79 | Average MPG: | 9.13 |

| All Vehicles | | | | | | |
|---------------------|----------|-----------------------|--|----------|---------------------|-------|
| Total Miles: | 62,377.0 | Total Gallons: | | 5,835.03 | Average MPG: | 10.69 |

| | |
|-----------------------|-------|
| Miles per day: | 132.2 |
|-----------------------|-------|

| | |
|-------------------------|-------|
| Gallons per day: | 12.36 |
|-------------------------|-------|

Budgetary issues precluded the purchase of a previously scheduled replacement police vehicle in 2005. However, Borough Council has authorized the purchase of a new police vehicle in 2006. After researching appropriate vehicles the department plans to use a cooperative purchasing agreement to order a 2006 Chevrolet Impala. This will replace the 2000 Impala currently in service. A number of vehicles were considered. The Impala was selected because it appears to be a good fit for Swarthmore. While it is rated for pursuit it is the most economical of the available vehicles specifically designed for

police service. It has the lowest purchase price and the best gas mileage. The current Impala has proven to be reliable and has over 90,000 miles of service.

CONCLUSION

The Swarthmore Police Department consistently strives to provide the highest level of service to Swarthmore and Rutledge Boroughs. Most of our work is invisible to the ordinary citizen. While Homeland Security is not mentioned in this report the department is working with Borough administration, the Swarthmore Fire and Protective Association, and Delaware County, to insure we are planning, training, and preparing to meet most emergencies. We also train and stay informed about many issues we sincerely hope we never have to address.

The department is well aware of, and greatly appreciates, the support it receives from the residents and businesses in Swarthmore and Rutledge. We will continue to work towards earning the respect and support given to us.

Respectfully submitted,

BRIAN H. CRAIG
Chief of Police

Appendix A

Reported Crime Data

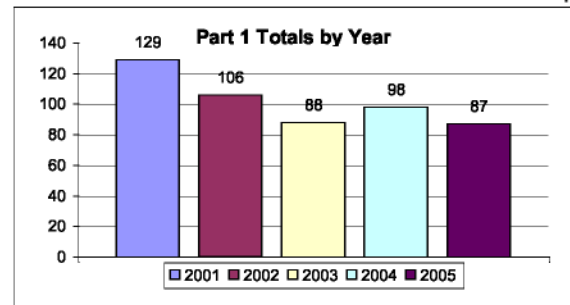
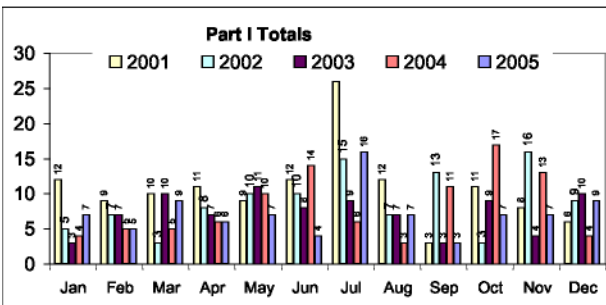
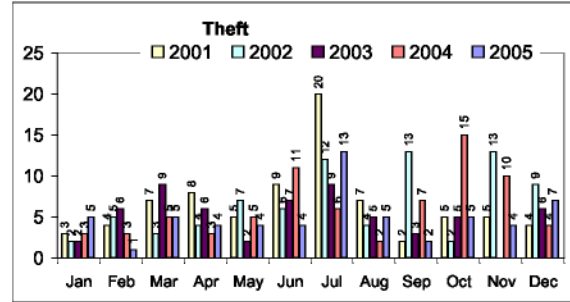
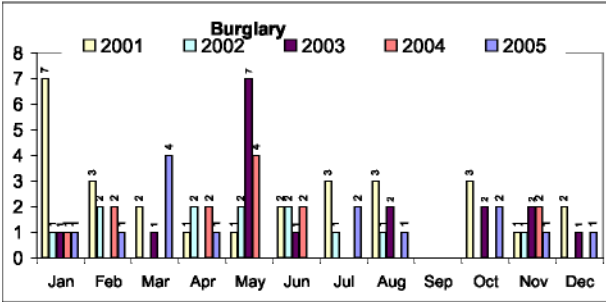
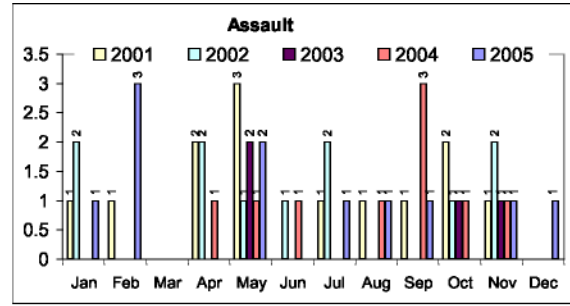
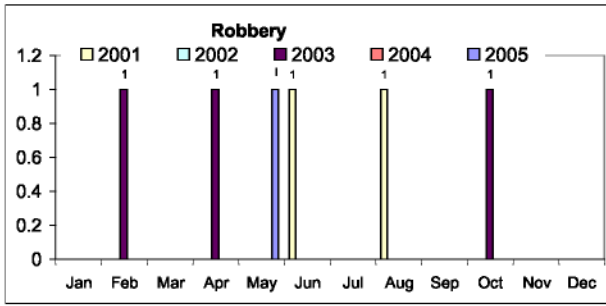
SWARTHMORE BOROUGH POLICE DEPARTMENT

UCR Reported Crime Overview, 2005

| | <i>Part I</i> | | | | | | | | | | | | Total |
|-----------------------------|---------------|-----------|-----------|-----------|-----------|-----------|-----------|-----------|-----------|-----------|-----------|-----------|------------|
| | Jan | Feb | Mar | Apr | May | Jun | Jul | Aug | Sep | Oct | Nov | Dec | |
| Murder | | | | | | | | | | | | | 0 |
| Rape | | | | | | | | | | | | | 0 |
| Robbery | | | | | 1 | | | | | | | | 1 |
| Assault | 1 | 3 | | | 2 | | 1 | 1 | 1 | | 1 | 1 | 11 |
| Burglary | 1 | 1 | 4 | 1 | | | 2 | 1 | | 2 | 1 | 1 | 14 |
| Theft | 5 | 1 | 5 | 4 | 4 | 4 | 13 | 5 | 2 | 5 | 4 | 7 | 59 |
| MV Theft | | | | 1 | | | | | | | | 1 | 2 |
| Arson | | | | | | | | | | | | | 0 |
| Total | 7 | 5 | 9 | 6 | 7 | 4 | 16 | 7 | 3 | 7 | 7 | 9 | 87 |
| | <i>Part I</i> | | | | | | | | | | | | |
| | January | February | March | April | May | June | July | August | September | October | November | December | Total |
| Forgery | | | | | | | | | | | | | 0 |
| Fraud | 1 | 1 | 1 | 1 | 1 | | 1 | 1 | 2 | | 3 | 2 | 14 |
| Embezzlement | | | | | | | | | | 1 | | | 1 |
| Receive Stolen Property | 2 | | | | 1 | | | | | | | | 3 |
| Vandalism | 3 | 4 | 10 | 7 | 12 | 6 | 9 | 7 | 6 | 9 | 3 | 7 | 83 |
| Weapons | | | | | | | | | | | | | 0 |
| Prostitution | | | | | | | | | | | | | 0 |
| Sex Offenses | | | | | | | | | | | | | 0 |
| Drug Abuse | | 1 | 1 | | | | 1 | 1 | | | | 1 | 5 |
| Gambling | | | | | | | | | | | | | 0 |
| Offenses Against Family | | | | | | | | | | | | | 0 |
| Driving Under the Influence | | 1 | 2 | | | 3 | 2 | 2 | 2 | 2 | 6 | 2 | 22 |
| Liquor Laws | 2 | | 2 | 4 | 1 | 2 | 1 | 1 | 5 | 2 | 3 | 1 | 24 |
| Drunkenness | | | 1 | | 1 | | 2 | | 1 | | | | 5 |
| Disorderly Conduct | 3 | 6 | 4 | 4 | 4 | 3 | 7 | | 5 | 5 | 1 | 2 | 44 |
| Vagrancy | | | | | | | | | | | | | 0 |
| All Others | 7 | 1 | 6 | 3 | 1 | 2 | 3 | 2 | 1 | 1 | 2 | 2 | 31 |
| Total | 18 | 14 | 27 | 19 | 21 | 16 | 26 | 14 | 22 | 20 | 18 | 17 | 232 |

SWARTHMORE BOROUGH POLICE DEPARTMENT

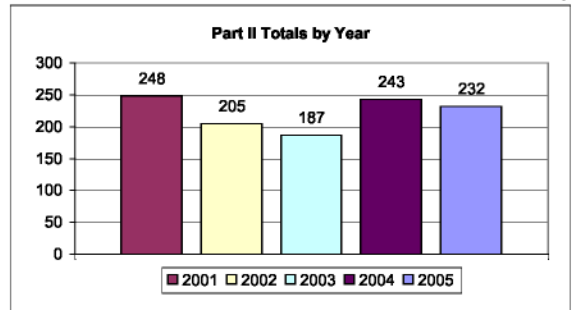
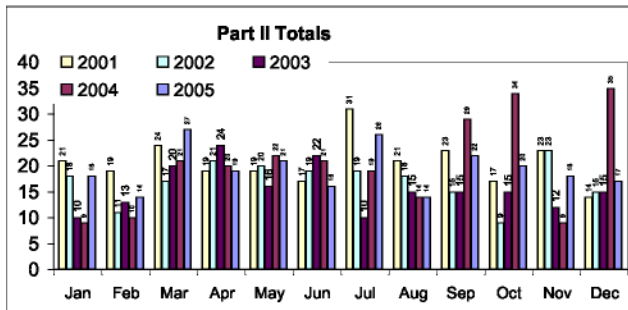
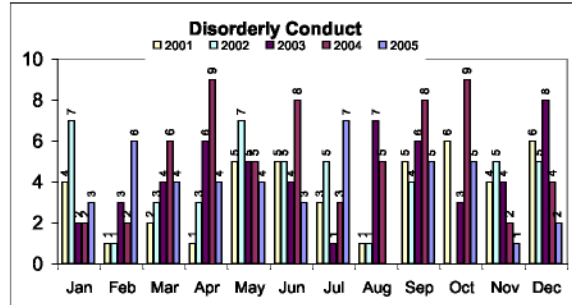
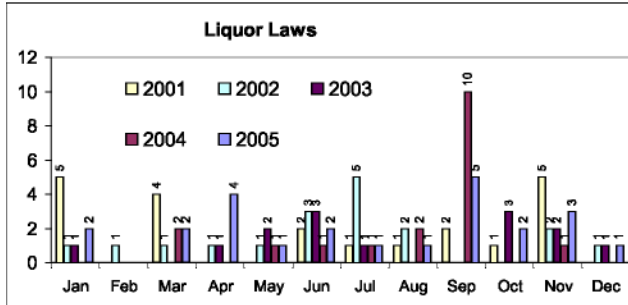
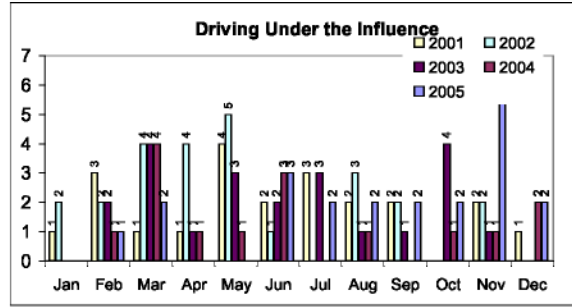
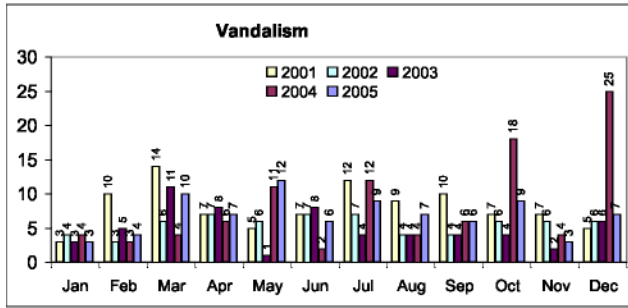
Selected Part I Crimes



1

SWARTHMORE BOROUGH POLICE DEPARTMENT

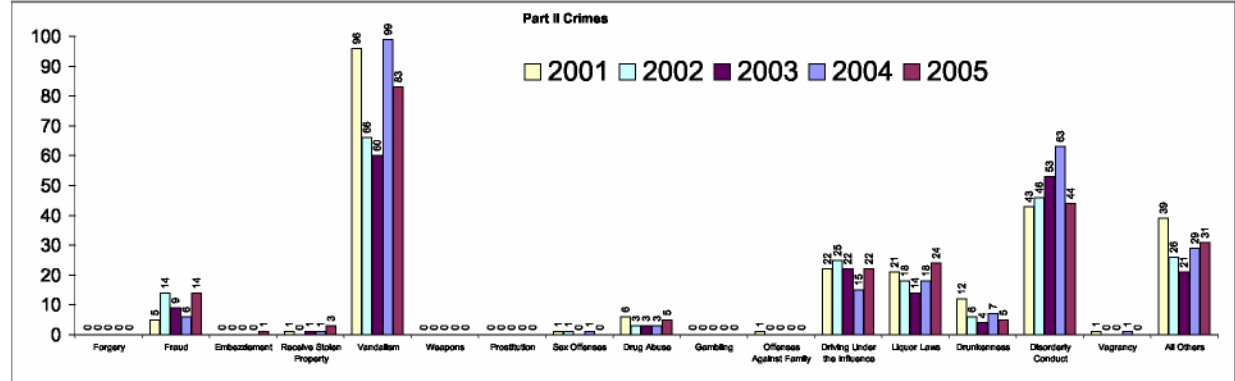
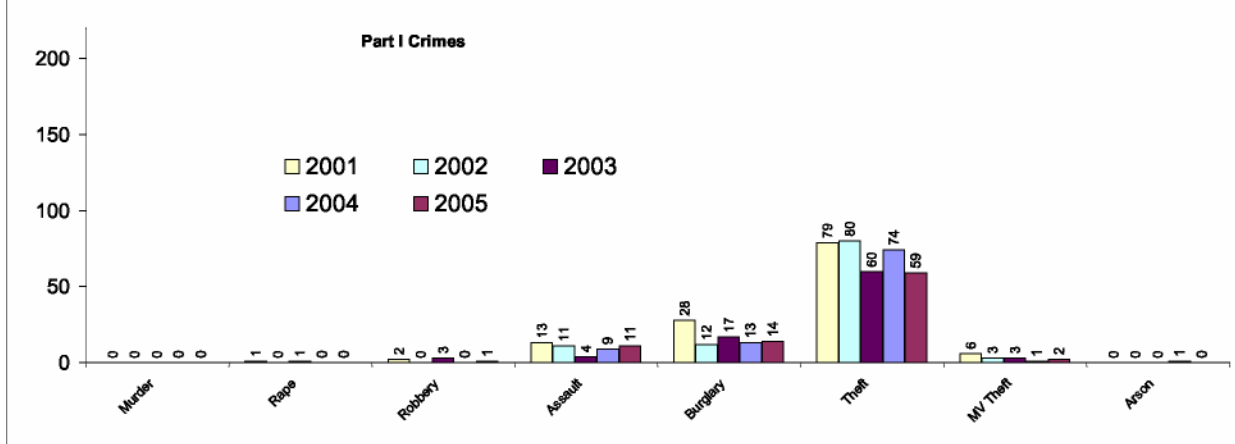
Selected Part II Crimes



SWARTHMORE BOROUGH POLICE DEPARTMENT

Part I and Part II Reported Crime Comparison

| | 1999 | 2000 | Change | 2001 | Change | 2002 | Change | 2003 | Change | 2004 | Change | 2005 | Change |
|-----------------------------|------------|------------|--------------|------------|---------------|------------|---------------|------------|---------------|------------|--------------|------------|---------------|
| Part I | | | | | | | | | | | | | |
| Murder | 0 | 0 | N/A | 0 | N/A | 0 | N/A | 0 | N/A | 0 | N/A | 0 | N/A |
| Rape | 1 | 0 | -100.0% | 1 | N/A | 0 | -100.0% | 1 | N/A | 0 | -100.0% | 0 | N/A |
| Robbery | 0 | 2 | N/A | 2 | 0.0% | 0 | -100.0% | 3 | N/A | 0 | -100.0% | 1 | N/A |
| Assault | 6 | 9 | 50.0% | 13 | 44.4% | 11 | -15.4% | 4 | -63.6% | 9 | 125.0% | 11 | 22.2% |
| Burglary | 6 | 25 | 316.7% | 28 | 12.0% | 12 | -57.1% | 17 | 41.7% | 13 | -23.5% | 14 | 7.7% |
| Theft | 95 | 184 | 93.7% | 79 | -57.1% | 80 | 1.3% | 60 | -25.0% | 74 | 23.3% | 59 | -20.3% |
| MV Theft | 5 | 0 | -100.0% | 6 | N/A | 3 | -50.0% | 3 | 0.0% | 1 | -66.7% | 2 | 100.0% |
| Arson | 0 | 0 | N/A | 0 | N/A | 0 | N/A | 0 | N/A | 1 | N/A | 0 | -100.0% |
| Total | 113 | 220 | 94.7% | 129 | -41.4% | 106 | -17.8% | 88 | -17.0% | 98 | 11.4% | 87 | -11.2% |
| | 1999 | 2000 | Change | 2001 | Change | 2002 | Change | 2003 | Change | 2004 | Change | 2005 | Change |
| Part II | | | | | | | | | | | | | |
| Forgery | 1 | 1 | 0.0% | 0 | -100.0% | 0 | N/A | 0 | N/A | 0 | N/A | 0 | N/A |
| Fraud | 4 | 8 | 100.0% | 5 | -37.5% | 14 | 180.0% | 9 | -35.7% | 6 | -33.3% | 14 | 133.3% |
| Embezzlement | 0 | 0 | N/A | 0 | N/A | 0 | N/A | 0 | N/A | 0 | N/A | 1 | N/A |
| Receive Stolen Property | 0 | 2 | N/A | 1 | -50.0% | 0 | -100.0% | 1 | N/A | 1 | 0.0% | 3 | 200.0% |
| Vandalism | 52 | 76 | 46.2% | 96 | 26.3% | 66 | -31.3% | 60 | -9.1% | 99 | 65.0% | 83 | -16.2% |
| Weapons | 0 | 0 | N/A | 0 | N/A | 0 | N/A | 0 | N/A | 0 | N/A | 0 | N/A |
| Prostitution | 0 | 0 | N/A | 0 | N/A | 0 | N/A | 0 | N/A | 0 | N/A | 0 | N/A |
| Sex Offenses | 1 | 5 | 400.0% | 1 | -80.0% | 1 | 0.0% | 0 | -100.0% | 1 | N/A | 0 | -100.0% |
| Drug Abuse | 11 | 4 | -63.6% | 6 | 50.0% | 3 | -50.0% | 3 | 0.0% | 3 | 0.0% | 5 | 66.7% |
| Gambling | 0 | 0 | N/A | 0 | N/A | 0 | N/A | 0 | N/A | 0 | N/A | 0 | N/A |
| Offenses Against Family | 0 | 3 | N/A | 1 | -66.7% | 0 | -100.0% | 0 | N/A | 0 | N/A | 0 | N/A |
| Driving Under the Influence | 18 | 29 | 61.1% | 22 | -24.1% | 25 | 13.6% | 22 | -12.0% | 15 | -31.8% | 22 | 46.7% |
| Liquor Laws | 65 | 25 | -61.5% | 21 | -16.0% | 18 | -14.3% | 14 | -22.2% | 18 | 28.6% | 24 | 33.3% |
| Drunkenness | 0 | 4 | N/A | 12 | 200.0% | 6 | -50.0% | 4 | -33.3% | 7 | 75.0% | 5 | -28.6% |
| Disorderly Conduct | 28 | 64 | 128.6% | 43 | -32.8% | 46 | 7.0% | 53 | 15.2% | 63 | 18.9% | 44 | -30.2% |
| Vagrancy | 0 | 0 | N/A | 1 | N/A | 0 | -100.0% | 0 | N/A | 1 | N/A | 0 | -100.0% |
| All Others | 44 | 56 | 27.3% | 39 | -30.4% | 26 | -33.3% | 21 | -19.2% | 29 | 38.1% | 31 | 6.9% |
| Total | 224 | 277 | 23.7% | 248 | -10.5% | 205 | -17.3% | 187 | -8.8% | 243 | 29.9% | 232 | -4.5% |

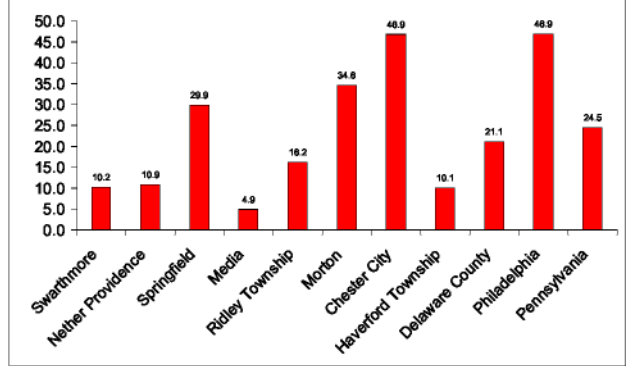
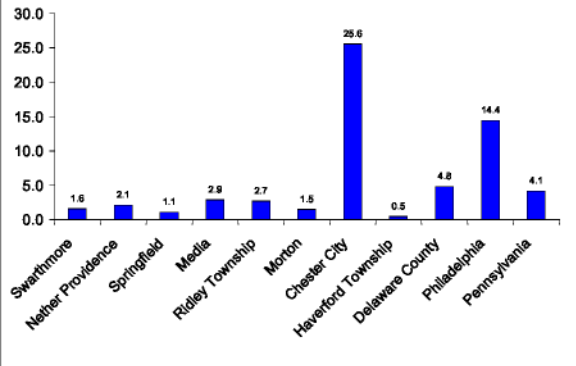


SWARTHMORE BOROUGH POLICE DEPARTMENT

Part One Crime Comparison for 2005

| | Swarthmore(incl. Rutledge) | | Nether Providence | | Springfield | | Media | | RidleyTownship | | Morton | | ChesterCity | | Haverford Township | | DelawareCounty | | Philadelphia | | Pennsylvania | |
|------------------------|----------------------------|--------------|-------------------|--------------|-------------|--------------|-----------|-------------|----------------|--------------|-----------|--------------|--------------|--------------|--------------------|--------------|----------------|--------------|---------------|--------------|----------------|--------------|
| | Crimes | Per1,000 | Crimes | Per1,000 | Crimes | Per1,000 | Crimes | Per1,000 | Crimes | Per1,000 | Crimes | Per1,000 | Crimes | Per1,000 | Crimes | Per1,000 | Crimes | Per1,000 | Crimes | Per1,000 | Crimes | Per1,000 |
| Population | 7,030 | | 13,456 | | 23,677 | | 5,533 | | 30,791 | | 2,715 | | 36,854 | | 48,498 | | 550,864 | | 1,517,550 | | 12,281,054 | |
| ViolentCrimes | | | | | | | | | | | | | | | | | | | | | | |
| Homicide | 0 | 0.00 | 0 | 0.00 | 1 | 0.04 | 1 | 0.18 | 0 | 0.00 | 0 | 0.00 | 15 | 0.41 | 1 | 0.02 | 38 | 0.07 | 392 | 0.26 | 781 | 0.06 |
| Rape | 0 | 0.00 | 0 | 0.00 | 5 | 0.21 | 0 | 0.00 | 2 | 0.06 | 1 | 0.37 | 35 | 0.95 | 1 | 0.02 | 113 | 0.21 | 1,141 | 0.75 | 3,830 | 0.31 |
| Robbery | 1 | 0.14 | 3 | 0.22 | 8 | 0.34 | 3 | 0.54 | 15 | 0.49 | 0 | 0.00 | 235 | 6.38 | 9 | 0.19 | 696 | 1.26 | 10,126 | 6.67 | 18,735 | 1.53 |
| Assault | 10 | 1.42 | 25 | 1.86 | 11 | 0.46 | 12 | 2.17 | 67 | 2.18 | 3 | 1.10 | 658 | 17.85 | 12 | 0.25 | 1,791 | 3.25 | 10,238 | 6.75 | 27,552 | 2.24 |
| Total | 11 | 1.56 | 28 | 2.08 | 25 | 1.06 | 16 | 2.89 | 84 | 2.73 | 4 | 1.47 | 943 | 25.59 | 23 | 0.47 | 2,638 | 4.79 | 21,897 | 14.43 | 50,898 | 4.14 |
| Property Crimes | | | | | | | | | | | | | | | | | | | | | | |
| Burglary | 13 | 1.85 | 22 | 1.63 | 37 | 1.56 | 14 | 2.53 | 80 | 2.60 | 9 | 3.31 | 485 | 13.16 | 56 | 1.15 | 1,813 | 3.29 | 11,001 | 7.25 | 53,262 | 4.34 |
| Robbery | 1 | 0.14 | 3 | 0.22 | 8 | 0.34 | 3 | 0.54 | 15 | 0.49 | 0 | 0.00 | 235 | 6.38 | 9 | 0.19 | 696 | 1.26 | 10,126 | 6.67 | 18,735 | 1.53 |
| Theft | 56 | 7.97 | 114 | 8.47 | 617 | 26.06 | 9 | 1.83 | 356 | 11.56 | 83 | 30.57 | 714 | 19.37 | 393 | 8.10 | 7,887 | 14.32 | 38,113 | 25.11 | 199,352 | 16.23 |
| Auto Theft | 2 | 0.28 | 7 | 0.52 | 45 | 1.90 | 1 | 0.18 | 48 | 1.56 | 2 | 0.74 | 294 | 7.98 | 31 | 0.64 | 1,250 | 2.27 | 12,007 | 7.91 | 29,495 | 2.40 |
| Total | 72 | 10.24 | 146 | 10.85 | 707 | 29.86 | 27 | 4.88 | 499 | 16.21 | 94 | 34.62 | 1,728 | 46.89 | 489 | 10.08 | 11,646 | 21.14 | 71,247 | 46.95 | 300,844 | 24.50 |

RSP data as of 4/18/2006



NOTE: Preliminary comparison, not all jurisdictions have fully reported.

SWARTHMORE BOROUGH POLICE DEPARTMENT
Breakdown of Reported Crime by Entity

| Part I | 2001 | | | | 2002 | | | | 2003 | | | | 2004 | | | | 2005 | | | | |
|-----------------------------|------------|-----------|--------------|------------|--------------|------------|--------------|------------|-----------|-------------|-----------|-------------|------------|--------------|------------|------------|-------------|-----------|-------------|------------|--------------|
| | Total | College | Rutledge | Swarthmore | Total | College | Rutledge | Swarthmore | Total | College | Rutledge | Swarthmore | Total | College | Rutledge | Swarthmore | Total | College | Rutledge | Swarthmore | |
| Murder | 0 | N/A | N/A | N/A | 0 | N/A | N/A | N/A | 0 | N/A | N/A | N/A | 0 | N/A | N/A | N/A | 0 | N/A | N/A | N/A | |
| Rape | 1 | 1 | 100.0% | 0.0% | 0 | 0.0% | 0 | 0.0% | 0 | 0.0% | 0 | 0.0% | 0 | N/A | N/A | N/A | 0 | N/A | N/A | N/A | |
| Robbery | 2 | 1 | 50.0% | 0.0% | 1 | 50.0% | 0 | N/A | 3 | 0.0% | 0.0% | 3 | 100.0% | 0 | N/A | 1 | N/A | N/A | 1 | 0.0% | |
| Assault | 13 | 2 | 15.4% | 2 | 15.4% | 9 | 69.2% | 11 | 1 | 9.1% | 2 | 18.2% | 8 | 72.7% | 4 | 1 | 25.0% | 1 | 25.0% | 2 | 50.0% |
| Burglary | 28 | 7 | 25.0% | 3 | 10.7% | 18 | 64.3% | 12 | 0.0% | 0.0% | 2 | 16.7% | 10 | 83.3% | 17 | 0.0% | 1 | 5.9% | 16 | 94.1% | |
| Theft | 79 | 15 | 19.0% | 8 | 10.1% | 56 | 70.9% | 83 | 9 | 11.3% | 3 | 3.8% | 68 | 85.0% | 60 | 4 | 6.7% | 3 | 5.0% | 53 | 88.3% |
| MV Theft | 6 | 0 | 0.0% | 1 | 16.7% | 5 | 83.3% | 3 | 0.0% | 0.0% | 2 | 66.7% | 1 | 33.3% | 3 | 0.0% | 0.0% | 3 | 100.0% | 1 | 0.0% |
| Arson | 0 | 0 | N/A | N/A | N/A | 0 | N/A | N/A | 0 | N/A | N/A | N/A | 0 | N/A | N/A | N/A | 0 | 0.0% | 0.0% | 1 | 100.0% |
| Total | 129 | 26 | 20.2% | 14 | 10.9% | 89 | 69.0% | 104 | 10 | 9.4% | 9 | 8.5% | 87 | 82.1% | 88 | 6 | 6.8% | 5 | 5.7% | 77 | 87.5% |
| Part II | Total | College | Rutledge | Swarthmore | Total | College | Rutledge | Swarthmore | Total | College | Rutledge | Swarthmore | Total | College | Rutledge | Swarthmore | Total | College | Rutledge | Swarthmore | |
| Forgery | 0 | N/A | N/A | N/A | 0 | N/A | N/A | N/A | 0 | N/A | N/A | N/A | 0 | N/A | N/A | N/A | 0 | N/A | N/A | N/A | |
| Fraud | 5 | 0 | 0.0% | 0.0% | 5 | 100.0% | 14 | 0.0% | 0.0% | 14 | 100.0% | 9 | 0.0% | 1 | 11.1% | 8 | 88.9% | 6 | 1 | 16.7% | |
| Embezzlement | 0 | N/A | N/A | N/A | 0 | N/A | N/A | N/A | 0 | N/A | N/A | N/A | 0 | N/A | N/A | N/A | 0 | N/A | N/A | N/A | |
| Rape/Sex | 1 | 0 | 0.0% | 0.0% | 1 | 100.0% | 0 | N/A | N/A | 1 | 0.0% | 0.0% | 1 | 100.0% | 1 | 0.0% | 0.0% | 1 | 100.0% | 3 | 1 |
| Property | 96 | 9 | 9.4% | 9 | 9.4% | 78 | 81.3% | 66 | 3 | 4.5% | 2 | 3.0% | 61 | 92.4% | 66 | 1 | 1.7% | 6 | 10.0% | 53 | 88.3% |
| Vandalism | 0 | N/A | N/A | N/A | 0 | N/A | N/A | N/A | 0 | N/A | N/A | N/A | 0 | N/A | N/A | N/A | 0 | N/A | N/A | N/A | |
| Weapons | 0 | N/A | N/A | N/A | 0 | N/A | N/A | N/A | 0 | N/A | N/A | N/A | 0 | N/A | N/A | N/A | 0 | N/A | N/A | N/A | |
| Prostitution | 0 | N/A | N/A | N/A | 0 | N/A | N/A | N/A | 0 | N/A | N/A | N/A | 0 | N/A | N/A | N/A | 0 | N/A | N/A | N/A | |
| Sex Offenses | 1 | 1 | 100.0% | 0.0% | 0 | 0.0% | 1 | 0.0% | 0.0% | 1 | 100.0% | 0 | N/A | N/A | N/A | 1 | 0.0% | 0.0% | 1 | 100.0% | |
| Drug Abuse | 6 | 2 | 33.3% | 1 | 16.7% | 3 | 50.0% | 3 | 0.0% | 0.0% | 3 | 100.0% | 3 | 0.0% | 1 | 33.3% | 2 | 66.7% | 3 | 0.0% | |
| Gambling | 0 | N/A | N/A | N/A | 0 | N/A | N/A | N/A | 0 | N/A | N/A | N/A | 0 | N/A | N/A | N/A | 0 | N/A | N/A | N/A | |
| Offenses | 1 | 0 | 0.0% | 0.0% | 1 | 100.0% | 0 | N/A | N/A | 0 | N/A | N/A | 0 | N/A | N/A | N/A | 0 | N/A | N/A | N/A | |
| Against Family | 22 | 0 | 0.0% | 4 | 18.2% | 18 | 81.8% | 25 | 1 | 4.0% | 3 | 12.0% | 21 | 84.0% | 22 | 1 | 4.5% | 2 | 9.1% | 19 | 86.4% |
| Driving Under the Influence | 21 | 7 | 33.3% | 0.0% | 14 | 66.7% | 16 | 2 | 11.1% | 3 | 16.7% | 13 | 72.2% | 14 | 3 | 21.4% | 11 | 78.6% | 16 | 5 | |
| Liquor Laws | 12 | 1 | 8.3% | 2 | 16.7% | 9 | 75.0% | 6 | 0.0% | 0.0% | 6 | 100.0% | 4 | 0.0% | 1 | 25.0% | 3 | 75.0% | 7 | 0.0% | |
| Disorderly Conduct | 43 | 3 | 7.0% | 7 | 16.3% | 33 | 76.7% | 44 | 2 | 4.3% | 1 | 2.2% | 43 | 93.9% | 53 | 3 | 5.7% | 6 | 11.3% | 44 | 83.0% |
| Vagrancy | 1 | 0 | 0.0% | 0.0% | 1 | 100.0% | 0 | N/A | N/A | 0 | N/A | N/A | 0 | N/A | N/A | N/A | 1 | 0.0% | 0.0% | 1 | 100.0% |
| All Others | 39 | 3 | 7.7% | 5 | 12.8% | 31 | 79.5% | 28 | 2 | 7.7% | 1 | 3.8% | 23 | 88.5% | 21 | 1 | 4.8% | 1 | 4.8% | 19 | 90.5% |
| Total | 248 | 26 | 10.5% | 28 | 11.3% | 194 | 78.2% | 204 | 10 | 4.9% | 10 | 4.9% | 185 | 90.2% | 187 | 9 | 4.8% | 18 | 9.6% | 160 | 85.6% |